



MONTHLY MEMBERSHIP PROGRESS REPORT

District 3233E2

Results as of: 06/30/2018

GMT: ANIL TULSYAN

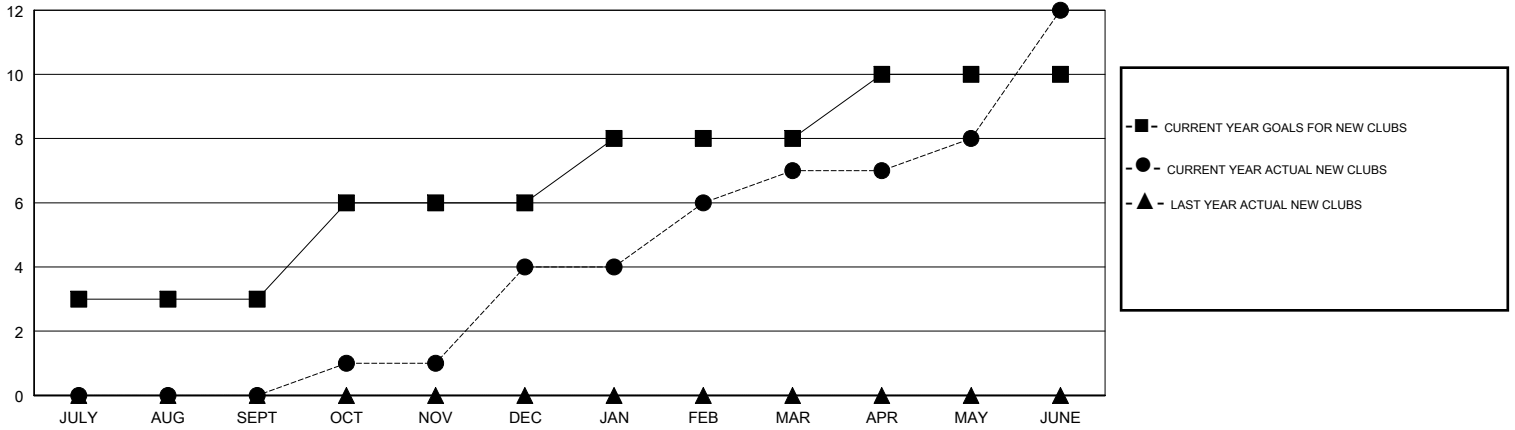
LOCATION INDIA

GMT CA

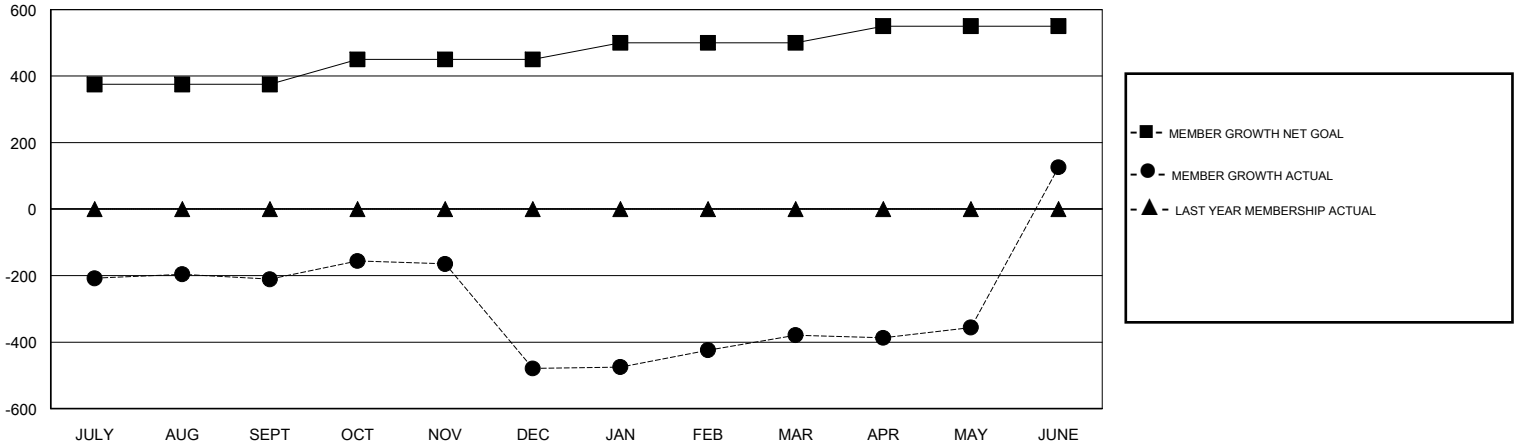
Clubs			
RESULTS FOR 2017-2018			
QUARTER	NEW CLUB GOAL	NEW CLUBS	DROPPED CLUBS
JULY/AUG/SEPT	3	0	2
OCT/NOV/DEC	3	4	13
JAN/FEB/MAR	2	3	0
APR/MAY/JUNE	2	5	0

Members			
RESULTS FOR 2017-2018			
QUARTER	MEMBER GROWTH NET GOAL	MEMBER GROWTH ACTUAL	DROPPED MEMBERS ACTUAL (including transfers)
JULY/AUG/SEPT	375	111	316
OCT/NOV/DEC	75	165	430
JAN/FEB/MAR	50	409	166
APR/MAY/JUNE	50	1,127	561

GOALS AND ACTUAL NEW CLUBS CUMULATIVE



GOALS AND ACTUAL MEMBERS CUMULATIVE



DROPPED CLUBS: 15	112 CLUBS OF 150 ADDED 1 OR MORE NEW MEMBERS	<u>GENDER DISTRIBUTION</u> MALE 4,561 (73.73%) FEMALE 1,625 (26.27%) Women Percentage Fiscal Year Goal: 20%
<u>DROPPED MEMBERS</u> DECEASED 16 CLUB CANCELLED 395 OTHER 1,062 TOTAL 1,473	CLICK HERE FOR CUMULATIVE MEMBERSHIP DATA	TOTAL FAMILY UNIT MEMBERS 0 FAMILY MEMBERS PAYING HALF DUES 0